

# MONTHLY MEMBERSHIP PROGRESS REPORT

District 1 CS

Results as of: 6/30/2020

GMT:

LOCATION ILLINOIS

GMT CA

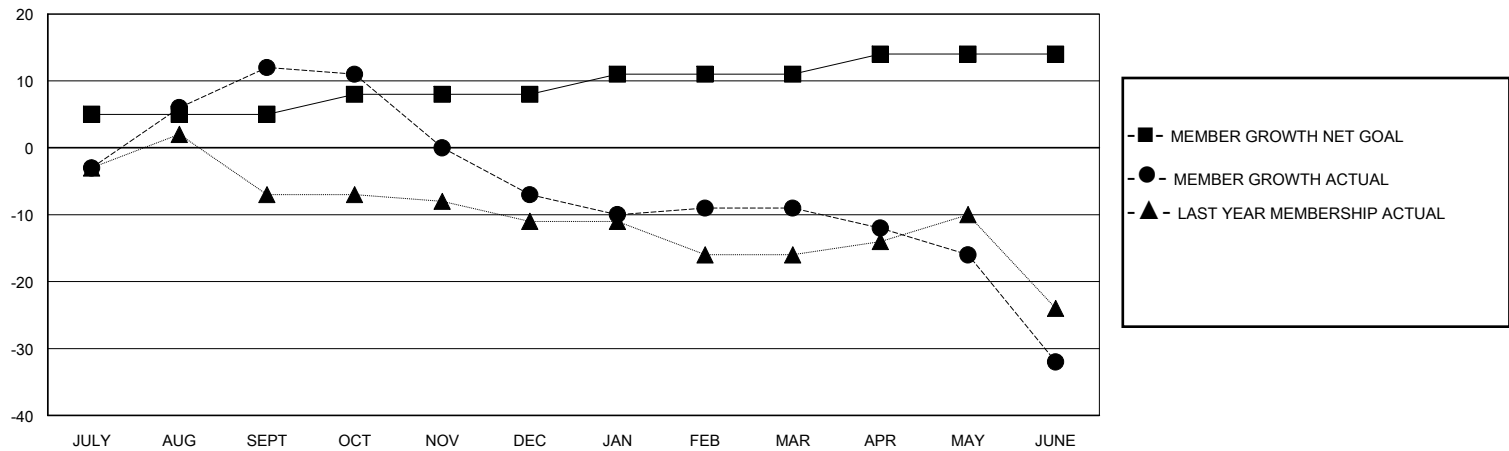
Clubs			
RESULTS FOR 2019-2020			
QUARTER	NEW CLUB GOAL	NEW CLUBS	DROPPED CLUBS
JULY/AUG/SEPT	0	0	0
OCT/NOV/DEC	0	0	1
JAN/FEB/MAR	0	0	0
APR/MAY/JUNE	0	0	1

Members			
RESULTS FOR 2019-2020			
QUARTER	MEMBER GROWTH NET GOAL	MEMBER GROWTH ACTUAL	DROPPED MEMBERS ACTUAL (including transfers)
JULY/AUG/SEPT	5	21	9
OCT/NOV/DEC	3	9	27
JAN/FEB/MAR	3	13	14
APR/MAY/JUNE	3	4	25

GOALS AND ACTUAL NEW CLUBS CUMULATIVE



GOALS AND ACTUAL MEMBERS CUMULATIVE



DROPPED CLUBS: 2	17 CLUBS OF 30 ADDED 1 OR MORE NEW MEMBERS	<b>GENDER DISTRIBUTION</b> MALE 489 (74.43%) FEMALE 168 (25.57%)
<b>DROPPED MEMBERS</b> DECEASED 6 CLUB CANCELLED 7 OTHER 62 TOTAL 75	<a href="#">CLICK HERE FOR CUMULATIVE MEMBERSHIP DATA</a>	TOTAL FAMILY UNIT MEMBERS 76 FAMILY MEMBERS PAYING HALF DUES 39